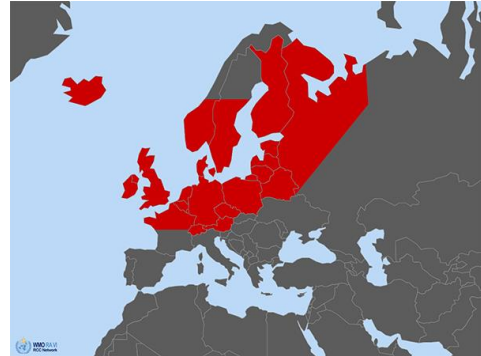


Guidance on **above-normal precipitation** ID: 202001-t

Area concerned: Iceland, Ireland, United Kingdom, northern France, Luxembourg, Belgium, Netherlands, Germany, Denmark, southern Norway, southern Sweden, Finland, Estonia, Latvia, Lithuania, Poland, Belarus, northern European Russia, Switzerland, Austria, Czech Republic



Initial statement issued on 8 January 2020
First update issued on 17 January 2020
Second update issued on 24 January 2020
Third update issued on 4 February 2020
Fourth update issued on 18 February 2020
Fifth update issued on 26 February 2020
Sixth update issued on 10 March 2020
Termination issued on 17 March 2020

Valid: Begin: 8 January 2020
End: 17 March 2020

To: Climate Watch focal points of NMHS of Iceland, Ireland, United Kingdom, France, Luxembourg, Belgium, Netherlands, Germany, Denmark, Norway, Sweden, Finland, Estonia, Latvia, Lithuania, Poland, Belarus, Russia, Switzerland, Austria, Czech Republic

The RA VI RCC Network Offenbach Node on Climate Monitoring (RCC Node-CM) is responsible for providing Climate Watch guidance information for NMHSs' own consideration for issuing climate advisories for their territory.

After having consulted the consortium partners of the RCC Node-CM and RCC Node-LRF (RA VI RCC Network Toulouse and Moscow Node on Long-Range Forecasting), RCC Node-CM issues the following guidance information:

Due to the results from monthly forecasts we announce:

“The termination of the Climate Watch Advisory on above-normal precipitation over southern parts of Northern Europe, Northwestern, Central and northern parts of Eastern Europe. Precipitation will be mostly around normal or below normal in the next weeks. “

This information should be used as guidance for the National Meteorological and Hydrological Services (NMHS) in a pre-operational mode. It is up to the above-mentioned NMHSs to monitor the status and evolution of the current climate conditions closely and to consider issuing a national Climate Watch Advisory. RCC Node-CM would appreciate feedback from NMHS whether this information was helpful. Also, any suggestion on further pieces of information needed by NMHSs is highly welcomed!

Climate Watch Advisory

A template for a national climate watch advisory as agreed among the climate watch pilots and RCC Node-CM can be provided on request.

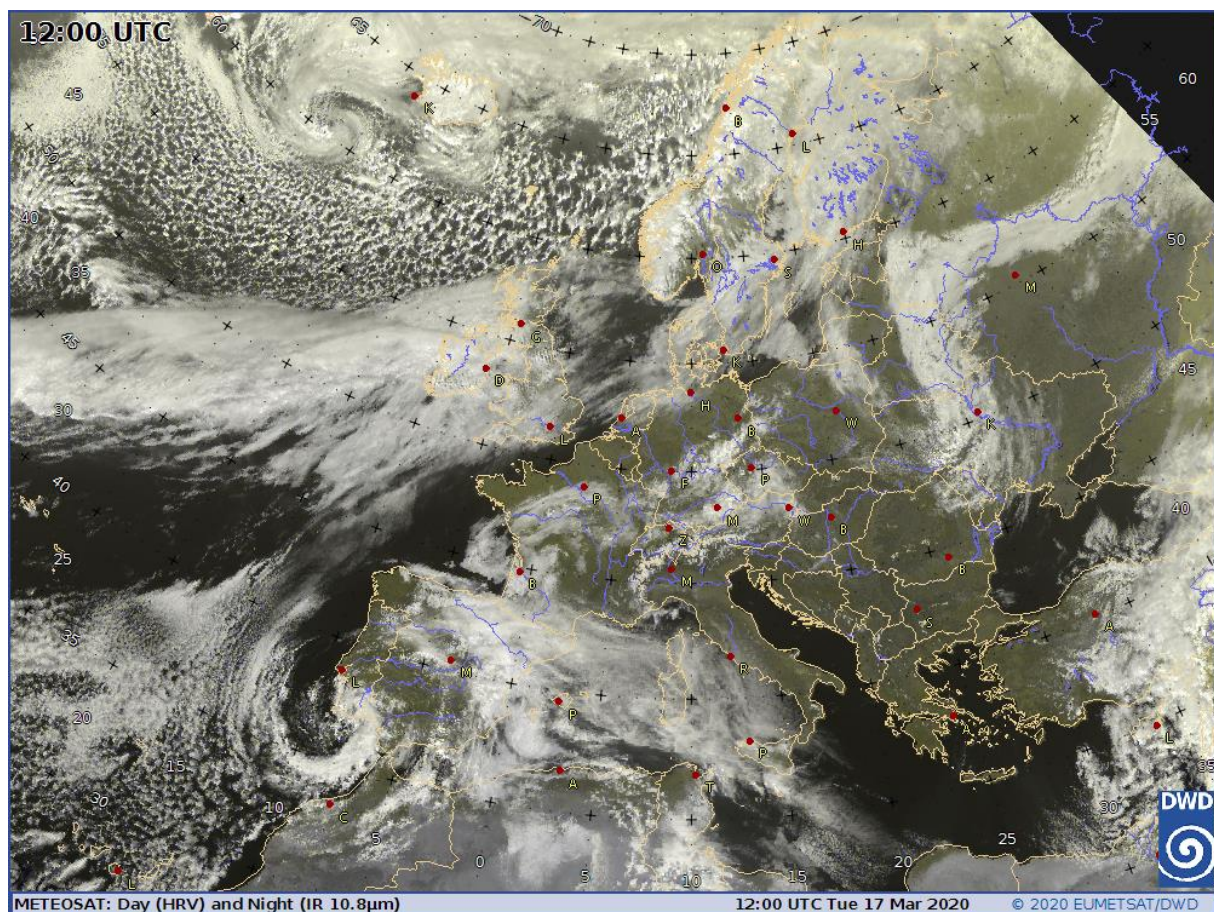
Please note that further information can be obtained from RCC Node-CM website (www.dwd.de/rcc-cm) concerning Climate Monitoring and from RCC Node-LRF websites (<http://seasonal.meteo.fr>, <http://neacc.meteoinfo.ru/forecast>) concerning Long-Range Forecast or by e-mail to rcc.cm@dwd.de or rcc-lrf-mf@meteo.fr.

For ECMWF member's further information on monthly forecasts after logging in is provided at <http://www.ecmwf.int/> ->Forecasts

We will monitor the evolution of the anomaly, issue updates if significant change arise and close the advice when no clear signal can be detected in the forecasts.

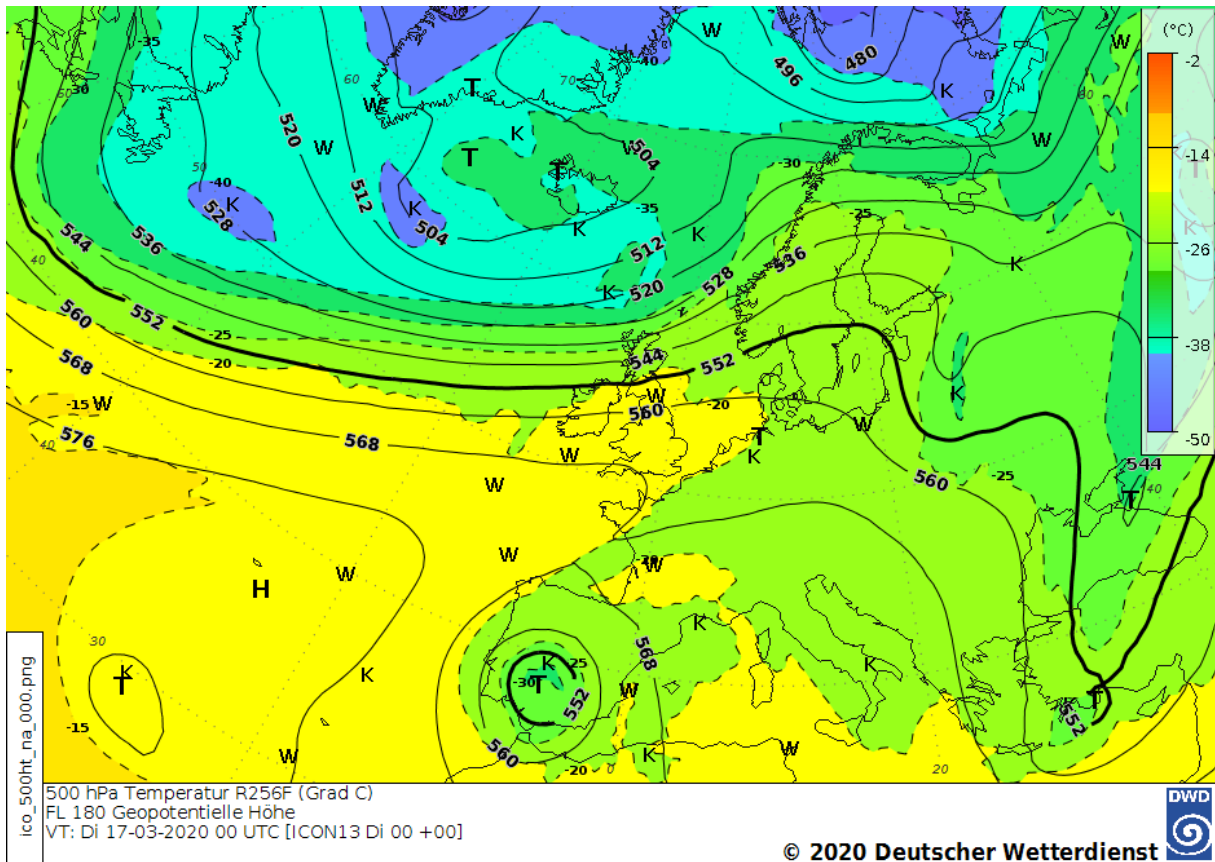
On behalf of the RCC-CM Team

Supplementary material:

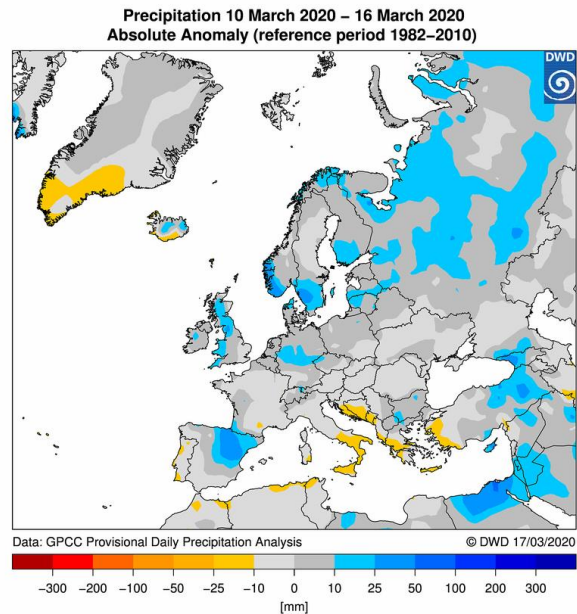
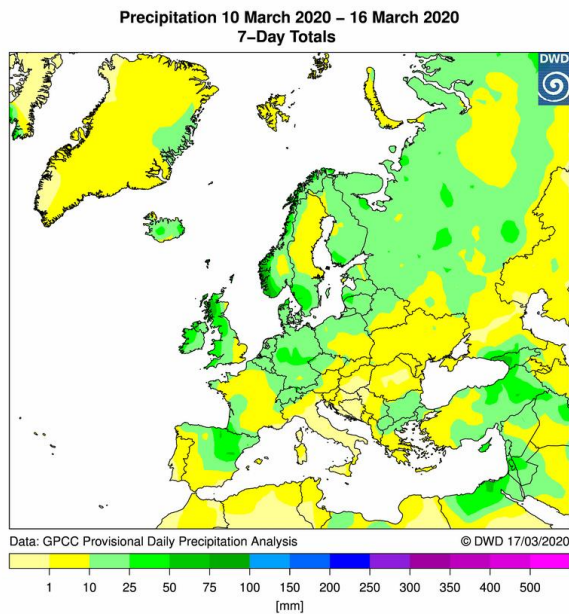


Meteosat satellite image 17 March 2020, 12 UTC. Source: DWD

Climate Watch Advisory



500-hPa chart, 17 March 2020, 00 UTC. Source: DWD



Weekly precipitation totals and anomalies (1982-2010 reference) for the recent week. Source: DWD